

# Advanced Manufacturing & Engineering Capabilities

## Material Expertise

- INCONEL®
- KOVAR®
- MU-METAL®
- HASTELLOY®
- STAINLESS STEEL
- ALUMINUM
- TITANIUM
- COPPER
- MONEL®
- NICKEL
- COLD ROLLED STEEL
- BRASS
- TANTALUM
- BERYLLIUM COPPER
- WASPALOY
- HAYNES® 282®
- PHOSPHOR BRONZE



LEARN MORE, TODAY!

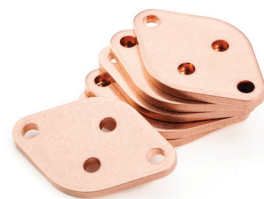
### Deep Draw



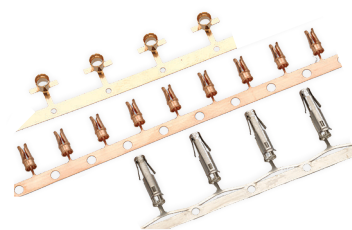
### Shallow Draw



### Progressive Stamping



### Micro-Mini Stamping



### Single Stroke



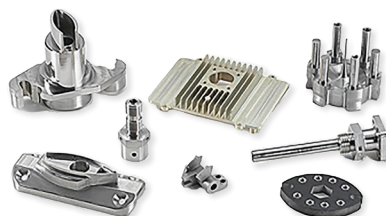
### CNC Milling & Turning



### Swiss Screw Machining



### Wire EDM



ISO 13485 - ISO 9001 - AS9100- ITAR Registered



Visit us now at [precisionxmfg.com](http://precisionxmfg.com)



## Manufacturing Precision Metal Components for High Reliability Applications

GEM DEEP DRAW

COINING MFG

Cational DEEP DRAW

ditron inc.

MSK Precision Products

# Your Engineering & Manufacturing Partner From Conception to Production.

Leading supplier of high-reliability, precision metal components

Serving growth oriented industries, including:

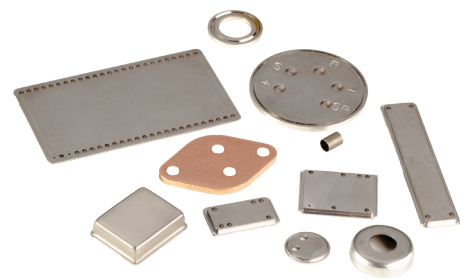
- Aerospace & Defense
- Medical Devices
- Electrical Connectors
- Electric Vehicles
- Mining
- Semiconductor
- Oil & Gas

## Core Capabilities



### Deep Draw With Transfer

- Multi-Station Transfer Presses ranging from 5 to 300 tons
- Diameters from .020" to 18" w/ Draw Depth up to 18"
- Coil Thickness from .002" to .250"
- Tolerances as tight as +/- .0004"



### Progressive Stamping

- High Speed Progressive Presses from 20 to 200 tons
- Width up to 6"
- Coil Thickness from .001" to .250"
- Tolerances as tight as +/- .0005"
- Feature Types: Forming, Bending, Coining, Piercing, Bulging, Tapping and more



### Swiss Turning - Automatic Screw Machines

- Diameters from .005 to .500" w/lengths up to 5"
- Tolerances as tight as +/- .0001"



### Swiss Turning - CNC

- Diameters from .012" to 1.260" w/lengths up to 30"
- Tolerances as tight as +/- .0001"



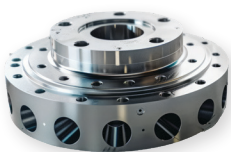
### Multi-AXIS Machining

#### 5 Axis Milling - CNC

- Work Envelope: 18" x 14" x 14"
- Tolerances as tight as +/- .0001"
- Surface Finish: Less than 16uin

#### 3 Axis Milling - CNC

- Work Envelope: 64" x 32" x 30"
- Tolerances as tight as +/- .0001"



### Turning - CNC

- Work Envelope: 14.2" Diameter x 23.6" Length
- Tolerances as tight as +/- .0002"



### Wire EDM - CNC

- Work Envelope: 8" x 12" x 14.5"
- Corner radii as sharp as .004"
- Tolerances as tight as +/- .0001"

## Secondary Processes

➤ Degreasing	➤ Deburring	➤ Laser Marking
➤ Bead Blasting	➤ Polishing	➤ Bending
➤ Anodizing	➤ Laser Welding	➤ Passivation
➤ Powder Coating	➤ TIG Welding	➤ Resistance spot welding
➤ Plating	➤ Brazing	

Visit us now at [precisionxmfg.com](https://precisionxmfg.com)